



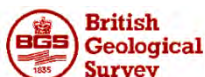
European Technology Platform
on Sustainable Mineral Resources

EO-MINERS



Earth Observation for Monitoring and Observing Environmental and Societal Impacts of Mineral Resources Exploration and Exploitation

Project no: 244242, call 2009, Theme 6, Topic ENV.2009.4.1.3.2

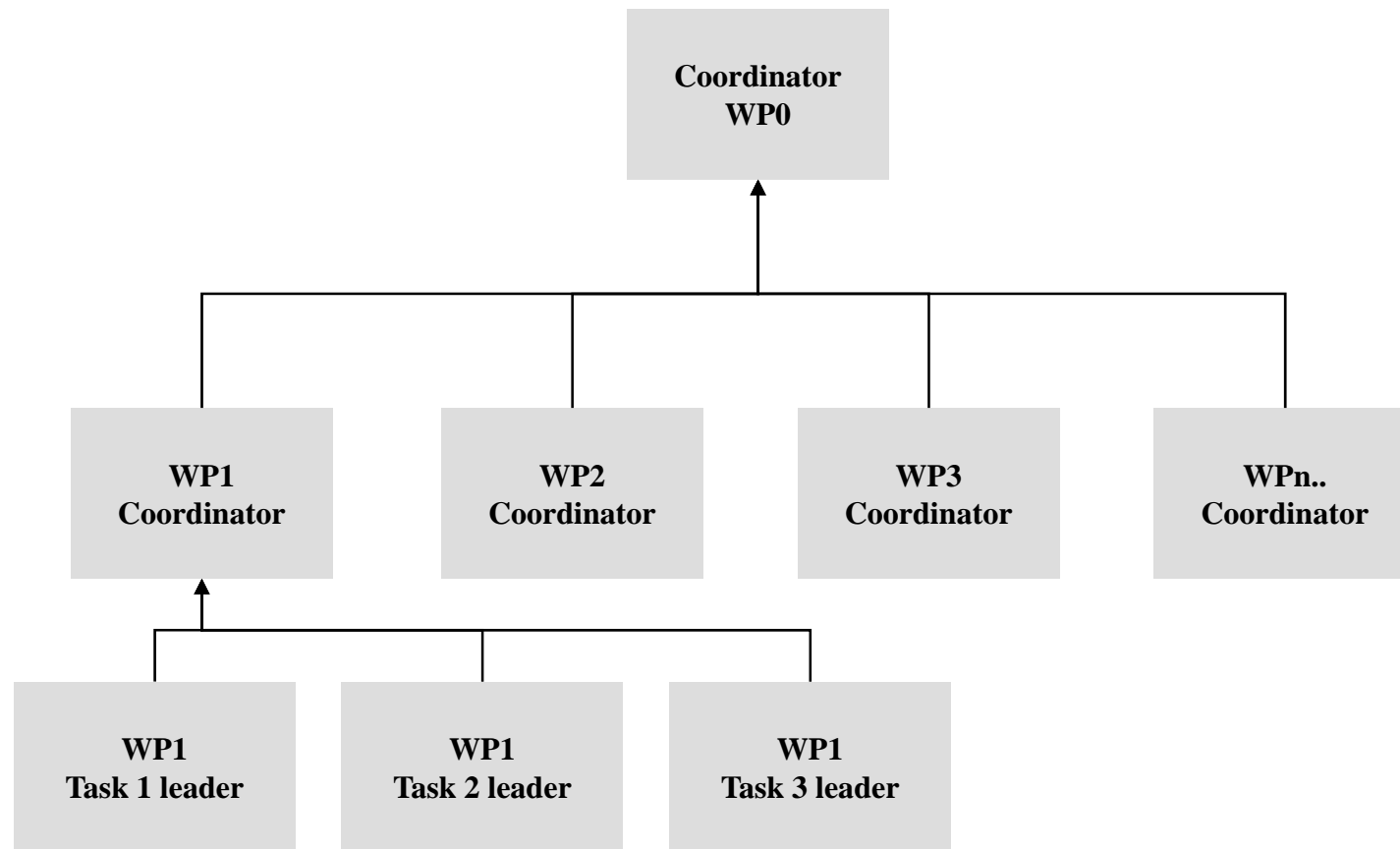


EO-MINERS today

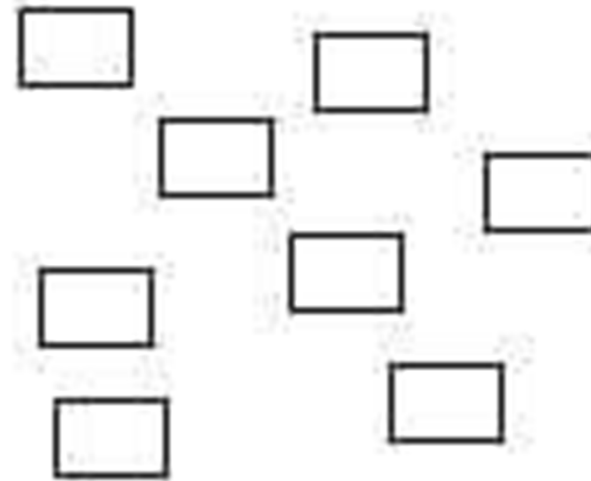
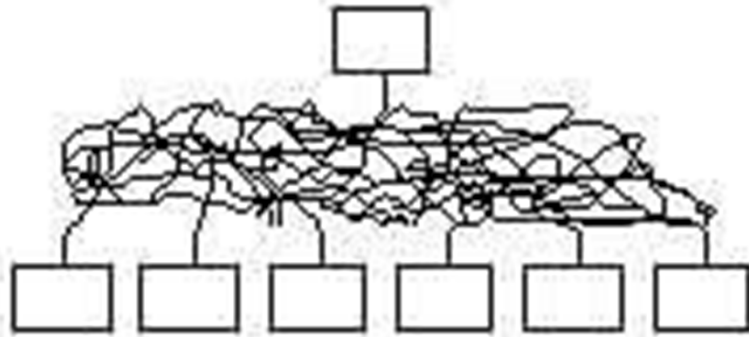
- Excellent scientific team and outputs production, but
- For both "good" and "bad" reasons
 - Bad coherence between WPs
 - Insufficient "discipline"
 - Lack of internal communication
 - Far behind the schedule
 - Delays in deliverables
 - Missing planning and follow-up tool



Foreseen management structure



Current management structure





Field visit foreseen and current schedule

- Kick-off decision
 - Sokolov
 - August 1 to 15
 - Field visit, collecting samples
 - Witbank
 - Sept 20 to Oct 1st
 - 3rd site
 - 4th term 2010 ???
- Current status
 - Sokolov
 - August 1 to 5
 - HS survey, soil and dust sampling
 - Witbank
 - ????
 - Makmal
 - Oct 4 to 8 (BRGM only!)
 - First contact with local stakeholders



First 6-monthly report

- Due date : 30 September
- Decision during 6-monthly MC meeting:
 - By July 31st: partners to send their contributions to the WP leaders
 - By Sept 15th: WP leaders and the Coordination to compile and synthesise the reports
 - By Sept 20th: WP leaders and the Coordination to carry out the reviewing
 - On Sept 30th: Final version of the 6th monthly report to be sent to the EC Project Officer
- Nothing received on Sept 13
- Last contribution received on Sept 27



Deliverables and reports

- Should be
 - Done by task participants
 - Coordinated by task leader
 - Checked by WP leader
 - Reviewed and approved by coordinator

Author
With the collaboration of
N. Author

Checked by:

Name:

Date:

Signature:

Approved by:

Name:

Date:

Signature:





templates

- A report template prepared by Stephane and shaped by MIRO is available
- Still missing a formal Powerpoint template and a poster (under Powerpoint) template





About HS Surveys (experience from 2010 and the past 10 years)

- Sokolov 2010
 - *Altogether August 2010 was very cloudy and anything but stable. Due to widespread rainfall we always had to deal with lots of cloud convection and most of the time the gaps in-between were to small.*
 - *Actually we only had 3 days with good conditions*
 - *We all are happy we managed to have a successful HS data acquisition at the end although the weather in Europe was crazy in August.*
- The problem of summer HS survey in Europe
 - The sensor is coming from Australia for a single summer month, **i.e.:**
 - The sensor is available but the weather is bad, **or**
 - The weather is fine but the sensor is elsewhere in the world
- The RS team wants to promote this technique, but can we really promote it if
 - we can't ensure getting good quality data (cloud free, dry enough soils)
 - No "ready for data acquisition" sensor is available in Europe from April to October



Status of KG (1)

- Need for contract amendment
 - New budget, including CAIAG and KA budgets (to feed A1.1 and B2.4 of the DoW)
 - Involment (or not) of CAIAG and KA in each project tasks (to fill tables B1.1.3.3, B1.1.3.4, all tables in B1.1.3.5, B1.1.3.6 of the DoW)
 - Company profiles and expert CVs (to feed B2.2.13 and B2.2.14 of the DoW)
 - Official registration documents
- New CA to be signed



Status of KG (2)

- CAIAG and KA budgets approved

	CAIAG	KA	Total
Total Budget	238 782,00	33 672,00	272 454,00
Requested EC contribution	179 086,50	25 254,00	204 340,00

- BRGM will deduce 54 340 from its EC contribution
- Other partners to recalculate their budget according to last summer e-mail exchanges





INDABA

-
- Takes place on February 7 – 11 in Cape Town
 - Mining Indaba is the world's largest gathering of mining's most influential stakeholders and decision-makers vested in African mining
 - more than 3,000 individuals representing more than 800 international companies and approximately 40 government and quasi-government delegations





PREPARATION INDABA

- ICMM meeting on CSR on Thur Feb 10th am .
(last day of Indaba conf.)
SC to make a presentation ?
- EO-MINERS stakeholder meeting could be held in the afternoon.
 - Identification of a suitable room
 - List of possible guests : EOMINERS contacts?
Indaba's list of participants
 - Programme ? To be prepared and announced
 - Advertising :
 - By mail/EOMINERS website/ partners' contacts
 - on site on BRGM & CGS booths during the conference
(special leaflet, posters ?), invitations ? Canevassing?



- Percentage of overall budget (time and expenses) spent by each partner so far (M9)

%spent	1. BRGM	02. BGS	03 - TAU	04-DLR	05 - WI	06. GeoZS	07-MIRO	08-CGS	10- UWSQ	11-Czech-GS
Total Person-month	0,142	0,173	0,214	0,193		0,164	0,143	0,210	0,254	0,295
Personnel Direct Cost	0,131	0,201	0,214	0,139		0,225	0,134	0,210	0,360	0,251
Travel and Accomodation	0,179	0,307	0,444	0,152		0,114	0,146	0,125	0,098	0,402
Other Direct Cost	0,264	0,000	0,000	0,253			0,029	0,001		
Subcontracting								0,000		
Equipment			0,862	0,000						0,000
Consumables			0,000							0,363
Total Direct Cost	0,158	0,197	0,275	0,149		0,163	0,123	0,107	0,304	0,268
Indirect Cost	0,158	0,221	0,250	0,152		0,163	0,123	0,200	0,250	0,268
Total Indirect Cost	0,158	0,221	0,250	0,152		0,163	0,123	0,200	0,250	0,259
TOTAL	0,158	0,207	0,266	0,150		0,163	0,123	0,123	0,284	0,265

- None of the partner has reached the 30% (**of its total budget**) threshold allowing the 2nd half of prefinancing.
- The second half will be paid after the 1st official reporting at M18





Effort Table

- Need to follow-up the effort input in the project, by partner, for each WP.

EO MINERS **Partner Progress Report (Time)**

Please, fill in only the yellow boxes.

			01 - BRGM	02 - BGS	03 - TAU	04 - DLR	05 - WI	06 - Geo ZS	07 - MIRO	08 - CGS	09 - AOL ATD	10 - UVSQ	11 - Czech GS	12 - SU	13 - CAIAG	14 - KA	TOTAL	TOTAL	% achieved Vs budgeted	
			BUDGETED	BUDGETED	BUDGETED	BUDGETED	BUDGETED	BUDGETED	BUDGETED	BUDGETED	BUDGETED	BUDGETED	BUDGETED	BUDGETED	BUDGETED	BUDGETED	BUDGETED	ACHIEVED	BUDGETED DOW1	
			RTD/MGT/ Demonstration/ Other	RTD/MGT/ Demonstration/ Other	RTD/MGT/ Demonstration/ Other	RTD/MGT/ Demonstration/ Other	RTD/MGT/ Demonstration/ Other	RTD/MGT/ Demonstration/ Other	RTD/MGT/ Demonstration/ Other	RTD/MGT/ Demonstration/ Other	RTD/MGT/ Demonstration/ Other	RTD/MGT/ Demonstration/ Other	RTD/MGT/ Demonstration/ Other	RTD/MGT/ Demonstration/ Other	RTD/MGT/ Demonstration/ Other	RTD/MGT/ Demonstration/ Other	RTD/MGT/ Demonstration/ Other	RTD/MGT/ Demonstration/ Other	RTD/MGT/ Demonstration/ Other	RTD/MGT/ Demonstration/ Other
Workpackage 1:	WP 1: Policy Analysis & Indicator Identification	Person-Months M 9																0,0	0,0	
		Person-Months M 18																0,0	0,0	
		Person-Months M 36																0,00	0,00	
		TOTAL	0,0	0,0	0,0	0,0	0,0	0,0	0,0	0,0	0,0	0,0	0,0	0,0	0,0	0,0	0,0	0,0	0,0	0,0
Total MM planned for the WP			3,7	1,4	1,0	3,0	22,0	5,0	3,0	3,5	1,0	6,0	5,0	0,3	0,0	0,0	54,9	55,1		
Workpackage 2:	WP 2: EO Protocols and Standards	Person-Months M 9																0,0	0,0	
		Person-Months M 18																0,0	0,0	
		Person-Months M 36																0,00	0,00	
		TOTAL	0,0	0,0	0,0	0,0	0,0	0,0	0,0	0,0	0,0	0,0	0,0	0,0	0,0	0,0	0,0	0,0	0,0	0,0
Total MM planned for the WP			0,0	2,8	18,0	18,0	2,0	1,0	1,0	1,5	1,0	0,0	0,0	0,0	0,0	0,0	45,3	45,3		
Workpackage 3:	WP 3: EO Applications and Developments	Person-Months M 9																0,0	0,0	
		Person-Months M 18																0,0	0,0	
		Person-Months M 36																0,00	0,00	
		TOTAL	0,0	0,0	0,0	0,0	0,0	0,0	0,0	0,0	0,0	0,0	0,0	0,0	0,0	0,0	0,0	0,0	0,0	0,0
Total MM planned for the WP			11,3	16,3	18,0	36,0	2,0	6,0	1,0	11,7	1,0	0,0	22,0	0,6	0,0	0,0	125,9	126,4		
Workpackage 4:	WP 4: EO Integration and Products	Person-Months M 9																0,0	0,0	
		Person-Months M 18																0,0	0,0	
		Person-Months M 36																0,00	0,00	
		TOTAL	0,0	0,0	0,0	0,0	0,0	0,0	0,0	0,0	0,0	0,0	0,0	0,0	0,0	0,0	0,0	0,0	0,0	0,0
Total MM planned for the WP			17,4	6,0	5,0	12,0	3,0	1,0	1,0	8,0	1,0	0,0	8,0	0,0	0,0	0,0	62,4	62,7		
Workpackage 5:	WP 5: Communication, Dissemination and Capacity Building	Person-Months M 9																0,0	0,0	
		Person-Months M 18																0,0	0,0	
		Person-Months M 36																0,00	0,00	
		TOTAL	0,0	0,0	0,0	0,0	0,0	0,0	0,0	0,0	0,0	0,0	0,0	0,0	0,0	0,0	0,0	0,0	0,0	0,0
Total MM planned for the WP			3,7	5,0	0,0	3,0	6,0	9,0	24,5	4,0	1,0	6,0	2,0	0,3	0,0	0,0	64,5	64,7		
Workpackage 0:	WP 0: Management Activities	Person-Months M 9																0,0	0,0	
		Person-Months M 18																0,0	0,0	
		Person-Months M 36																0,00	0,00	
		TOTAL	0,0	0,0	0,0	0,0	0,0	0,0	0,0	0,0	0,0	0,0	0,0	0,0	0,0	0,0	0,0	0,0	0,0	0,0
Total MM planned for the WP			10,8	0,0	0,0	0,0	1,0	0,0	0,5	0,0	0,0	0,0	0,0	0,0	0,0	0,0	12,3	12,3		
		Person-Months M9 - Pe	6,7	5,5	9,0	13,9	3,6	4,3	0,0	0,0	0,0	3,1	10,9	0,0	0,0	0,0	0,0	56,9	0,0	0,0
		Person-Months M18- P	0,0	0,0	0,0	0,0	0,0	0,0	0,0	0,0	0,0	0,0	0,0	0,0	0,0	0,0	0,0	0,0	0,0	0,0
		Person-Months M36 - F	0,00	0,00	0,00	0,00	0,00	0,00	0,00	0,00	0,00	0,00	0,00	0,00	0,00	0,00	0,00	0,00	0,00	0,00
		TOTAL	6,7	5,5	9,0	13,9	3,6	4,3	0,0	0,0	0,0	0,0	3,1	10,9	0,0	0,0	0,0	56,9	0,0	0,0
Total Project Person-month			46,9	31,5	42,0	72,0	36,0	22,0	31,0	28,7	5,0	12,0	37,0	1,2	0,0	0,0	365,3	366,5		

0,1556658

DELIVERABLES

- Deliverables update at M6

Deliverable No.	Deliverable Name	Delivery Date	Status
D 0.1	Consortium agreement	Month 1	Completed, signed
D 0.4	Kick-off meeting minutes	Month 1	Completed
D 0.6	Project meeting minutes (first 6-month Management Committee meeting)	Month 6	Completed
D 1.1	Corporate policy analysis on mineral extraction, including a preliminary list of stakeholders	Month 6	Draft completed. Draft still to be completed with site information from Kyrgyzstan
D 1.2	Public policy analysis, including a preliminary list of stakeholders	Month 6	Draft completed. Draft still to be completed with site information from Kyrgyzstan
D 1.8	Status quo of monitoring environmental indicators by EO services	Month 6	Delayed to October 2010
D 2.1	Protocol to select a sensor for a mission and a guide to the set spectral and spatial configuration of the selected sensor.	Month 6	Completed
D 3.1	Report on site description and site conceptual model (one per site)	Month 6	Postponed due to withdrawal of ALC from the project and the later incorporation of the Kyrgyz partner.
D 5.1	Project web site	Month 2	Delayed due lack of information from project partners and unforeseen reasons. provisional version completed,.
D 5.2	General promotion material for the project	Month 3	Delivered on time
D 5.3	Final plan for the use and dissemination of foreground	Month 6	To be changed due to mistakes made in the planning phase (see WP descriptions)



DELIVERABLES due at (and from) M10

Del. no.	Deliverable name	WP no.	Lead beneficiary	Estimated indicative person-months	Nature	Dissemination level	Delivery date ¹ (proj. month)
D 1.3	Report on Corporate and Public policy analysis	1	WI	7.8	R	RE	month 12
D 2.2	Raw and radiometric data quality indices pre and post correction	2	TAU	7.5	R	RE	Month 9
D 3.1	Report on site description and site conceptual model (one per site)	3	BGS	16	R	RE	month 6
D 3.2	Report on data acquisition and validation	3	DLR	26.2	R	RE	month 10





Status of deliverables received at M10

- WP1
 - D1.1(draft) EO-Miners-WP111-V30.doc (UVSQ)
 - D1.2 EO-MINERS Public Policy Report.doc (WI)
 - D1.3 (draft) EO-Miners-WP113-V30.doc (UVSQ)
- WP2
 - D2.1 WP2 MissionPlanningDeliverableD2_with template.doc (TAU)
- WP3
 - D3.1 Report on site description and site conceptual model CZ + ZA (BGS)??
- WP5
 - D5.1 web site (MIRO)



OTHER ADMIN ISSUES

- Preparation of Annual meeting week in Witbank
 - Identification and invitation of advisors
 - Programme ? To be prepared

Planning Final meeting dates (in Versailles)





Beneficiary 1:BRGM	Management		RTD		Demo		Other	
category	Days	Cost	Days	Cost	Days	Cost	Days	Cost
Expert/project Manager	117	48 980.88	210	87 914.40			40	16 748.00
Senior scientist/researcher			210	87 914.40			20	8 373.90
Expert			30	16 053.60	100	31 713.20		
Project assistant								
Total personal (days)	117	48 980.88	450	191 882.40	100	31 713.20	60	25 121.90
Type	Number	Cost	Number	Cost	Number	Cost	Number	Cost
Travels In Europe (CZ)			8	24 720.00				
Travels outside Europe (ZA, CHL)			9	36 810.00	2	8 180.00		
Coordinator	3	6 600.00						
Project meetings	3	1 500.00						
GEO- GEOSS meetings	6	7 500.00						
Guest experts (6 experts)	15	37 500.00						
Total travels	27.00	53 100.00	17.00	61 530.00	2.00	8 180.00	0.00	0.00
Item	Number	Cost	Number	Cost	Number	Cost	Number	Cost
Purchase of satellite imagery			provision	63 500.00				
Project assistant	150	39 360.00						
Total other costs		39 360.00		63 500.00		0.00		0.00
Item	Number	Cost	Number	Cost	Number	Cost	Number	Cost
Total equipment		0.00		0.00		0.00		0.00
Item	Number	Cost	Number	Cost	Number	Cost	Number	Cost
Total Consumables		0.00		0.00		0.00		0.00
Item	Number	Cost	Number	Cost	Number	Cost	Number	Cost
Total Subcontracting		0.00		0.00		0.00		0.00
Total other direct costs		92 460.00	17.00	125 030.00	2.00	8 180.00	0.00	0.00
Grand Total direct costs		141 440.88		316 912.40		39 893.20		25 121.90
Direct costs		141 440.88		316 912.40		39 893.20		25 121.90
Indirect costs		41 609.94		144 032.26		22 806.07		17 547.65
Total		183 050.82		460 944.66		62 699.27		42 669.55
Requested EC contribution		172 423.62		345 708.49		31 349.64		42 669.55

Day 1 outputs

- Decision on budget reduction?
- Report review, approval, circulation
- Decision on INDABA participation?
- ZA meeting stakeholders early 2011 yes 14 – 18 february (same week as project meetings)
- Decision on RS expected tasks(DLR) ?
- Decision on MFA and RS?
- ZA visit first 2 weeks of February
- KG visit 13 – 21 april (WP1, WP5), 2 weeks end of june
- Decision on standards?



EO

- **Earth observation** is the gathering of information about planet Earth's physical, chemical and biological systems. It is used to monitor and assess the status of, and changes in, the [natural environment](#) and the [built environment](#). In recent years, Earth observation has become technologically more and more sophisticated. It has also become more important due to the dramatic impact that modern human civilization is having on the Earth, the need to minimize the negative impacts, and the opportunities Earth observation provides to improve social and economic well-being.
- Earth observations can include:
 - a [birdwatcher](#)'s notes on bird sightings
 - numerical measurements taken by a [thermometer](#), [wind gauge](#), ocean [buoy](#), [altimeter](#) or [seismometer](#)
 - photos and radar or sonar images taken from ground or ocean-based instruments
 - photos and radar images taken from remote-sensing satellites
 - decision-support tools based on processed information, such as maps and models
- Just as Earth observations consist of a wide variety of possible elements, they can be applied to a wide variety of possible uses. Some of the specific applications of Earth observations include:

